

# STEC

## ROBOTIC TOTAL STATION AXIS10



With extraordinary performance of 0.5"/1" angle and 1+1ppm distance accuracy, fast and smooth motorization, and the **Terra Master** onboard program, AXIS10 series make the measurement tasks easier.

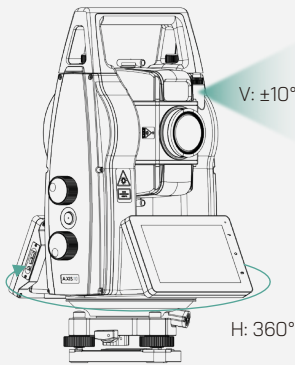
Easy develop for other industries, which brings you new possibilities.



Robotic total station AXIS10 is a smart choice for power, performance, and productivity which essentially optimize the time and cost with utmost accuracy.

Combines the engaging onboard software, the prism can be quickly aimed, locked and tracked with maybe the best-in-class **xTrak** technology.

## Torque Drive



### Torque Drive.

#### Let's Work in Silence.

Rotating at up to **180°/s**, AXIS10 series ensures high-dynamic performance with its extraordinary xTrak technology, which is smoother and faster than others.

**Prism Recognize.** Automatically recognizes and measures the prism at distances up to **1000m/3000m**.

**Prism Search.** Scan and detect the prism within **300m** from the entire working site, saving almost 2/3 of the measurement steps compared to a manual total station.

**Prism Lock.** Follow and lock a moving prism at **20°/s**, which eliminate the need for standing around.

### Flexible Connectivity

AXIS10 offers superior connectivity with USB, Wi-Fi, Bluetooth, long-range Bluetooth, serial port, and a SIM card slot, enabling effortless data exchange and remote control.

### Touch-to-Aim Camera

Just simply tap on the screen to instantly direct AXIS10 to aiming the target. The 5-megapixel camera also helps to record the images or videos of target when necessary.

### Work Further with Tablet

8-inch display with 500 nits brightness ensures clear visibility, even in bright light. **600m** remote control makes single-person operations efficient and effortless.

## Key Features

- ▶ 0.5", 1" angle accuracy
- ▶ 1+1ppm distance accuracy  
0.8+1ppm for AXIS10M 0.5"
- ▶ Silent working with **xTrak**
  - Torque drive, 180°/s
  - Prism recognize: 1000m or 3000m (AXIS10M)
  - Prism search 300m
  - Prism lock
- ▶ Guide light
- ▶ Touch-to-Aim camera
- ▶ 6.0-inch color and touch screen
- ▶ Intelligent onboard program
- ▶ Android 9.0 open connectivity
- ▶ IP65 protection



## Fully Controlled by Terra Master



Smart, simple, and portable – take full command of your robotic total station with **Terra Master**.



### Redesigned for the Future of Surveying

AXIS10 comes with a fully redesigned tablet-based software, with clean interface, iconic functions, status bar and quick-access toolbar – giving you instant visibility and control at every step.

### Built-In CAD Stake Out

Stake out directly from base maps with real-time drawing, editing, and visual guidance.

From setup to stakeout, it streamlines your workflow for a faster, smarter survey.

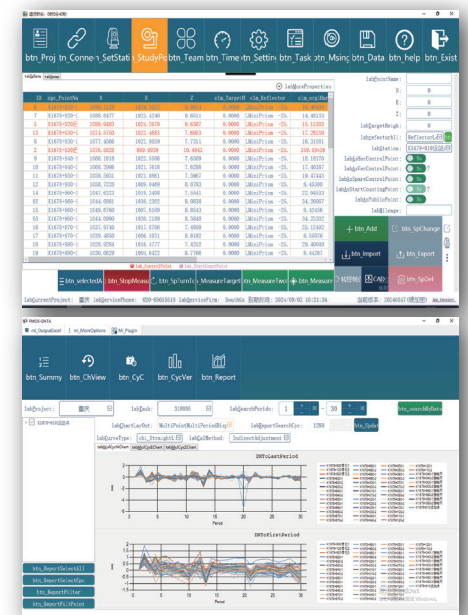
## AXIS 10M - Genius for Monitoring

AXIS10M delivers reliable performance with APR up to 3000 m and accuracy reaching  $0.8 + 1$  ppm.

### STEC-MOS

STEC-MOS is a professional automated monitoring software.

The system features automatic learning, automatic measurement, automatic data processing, and remote maintenance, enabling real-time data analysis and processing to provide timely warnings.



Prefer to build your own system? You're free to do so – and we're ready to support you with expert guidance and integration assistance.

## SDK Free for Develop

Unlock the full potential of your projects with AXIS10 robotic total station, now equipped with an open SDK development package.

Seamlessly integrate and collaborate across a range of application, from pipe jacking guidance and tunnel boring machines to smart construction and paving systems. AXIS10 brings precision, flexibility, and efficiency to every phase of your operation, making it the ultimate tool for advanced construction and engineering solutions.





# SPECIFICATIONS

## ANGLE

Accuracy	0.5"/1"
Method	Absolute Encoding
Detecting System	H: quadruple; V: quadruple
Minimum Reading	0.1"
Diameter of Circle	79mm
Vertical Angle	Zenith 0/ Horizontal 0
Unit	360°/400gon/6400mil

## DISTANCE

Single Prism Range	3,500m
Accuracy	1mm+1ppm / 0.8+1ppm (10M, 0.5")
Non-prism Range	1,000m
Accuracy	3mm+2ppm
Measuring Time - Prism	Fine: <0.7s; Tracking: <0.3s
- Non-P	T<600m: 0.5-3s; T>600m: <10s
PPM Correction	Manual input, auto correction

## TELESCOPIC

Length	164.5mm
Diameter	45mm (EDM: 47mm)
Magnification	30x
Image	Erect
Field of View	1°30'
Resolving Power	3"
Minimum Focus	1.5m

## xTrak MOTORIZATION

Type	Torque motor
Maximum Speed	180°/s
Auto Prism Recognize	
Working Range	1.5-1000m / 1.5-3000m (10M)
Searching Time	5s
Prism Search	
Working Range	1.5-300m
Typical Searching Time	<10s
Range	V: ±10°, H: 360° in default; Allows user-defined settings
Prism Lock	Yes
Tracking Speed	5°/s (No tracking for AXIS10M)

## COMPENSATOR

Tilt Sensor	Dual-axis Liquid electric sensor
Range	4'
Accuracy	1"

## LEVEL

Circular Level	6"/2mm
----------------	--------

## LASER PLUMMET

Type	635nm, Class II
Accuracy	0.4mm at 1.5m height
Spot	1.8mm at 1.5m height

## GENERAL

Display	Two sides, 6-inch color touch LCD
Camera	5 MP
Guide Light	Red/Green, 635nm/530nm
OS	Android 9.0
Internal Memory	RAM 3GB, ROM 32GB
CPU	MSM8953
I/O Interfaces	RS232, USB, Micro USB, Bluetooth 4.0
WLAN	Dual-band 802.11/a/b/g/n
Battery	14.4V, 6400mAh, Li-ion battery
Working Duration	8 Hours
Waterproof/Dustproof	IP65
Operating Temperature	-20°C to +50°C
Dimension	430 (H)*255 (L)*235 (W) mm
Weight	9.3KG

## TABLET

Display	8-inch multi-touch color screen
Camera	Rear: 13 MP / Front: 5 MP
OS	Android 10
Internal Memory	RAM 4GB, ROM 64GB
CPU	SDM632
I/O Interface	Type C, Bluetooth 4.2, WLAN
Battery	3.8V, 9000mAh, Li-ion battery
Working Duration	10 Hours
Waterproof/Dustproof	IP67
Operating Temperature	-20°C to +60°C
Dimension	235*146*13 mm



GUANGZHOU STAR INFORMATION TECHNOLOGY CO., LTD.

Add: C-201 Yunsheng Science Park, No.11 Middle Guangpu Road, Guangzhou 510663, China  
Email: sales@stecprecision.com support@stecprecision.com

